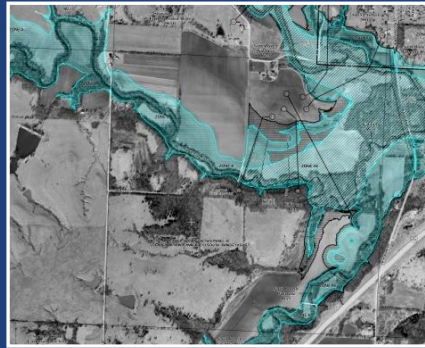


My New DWR Beginning Maybe Short on Past Experiences, But Here are My Thoughts for the Future



State Association of Kansas Watersheds
Earl Lewis, Chief Engineer
February 1, 2022

What Are Our Biggest Issues?

- Groundwater Decline
- Loss of Reservoir Storage
- Water Quality Issues
- Extreme Events

What does the future hold?

- Changing Demographics
- More Interest from Urban/Suburban
- More Funding?
- A push for more sustainability

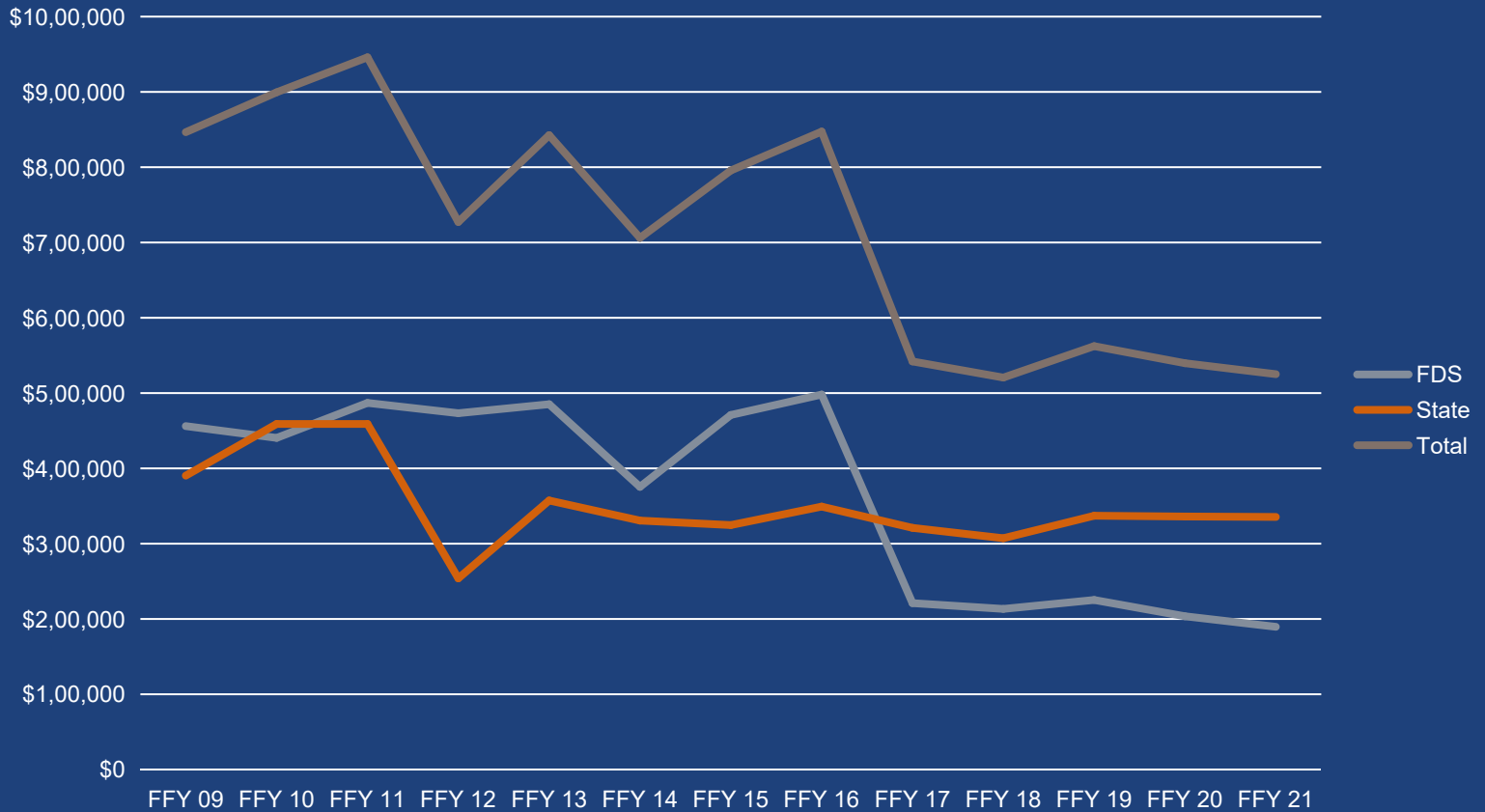
What does the future hold?

- Changing Demographics
- More Interest from Urban/Suburban
- More Funding?
- A push for more sustainability

Current Hot Topics

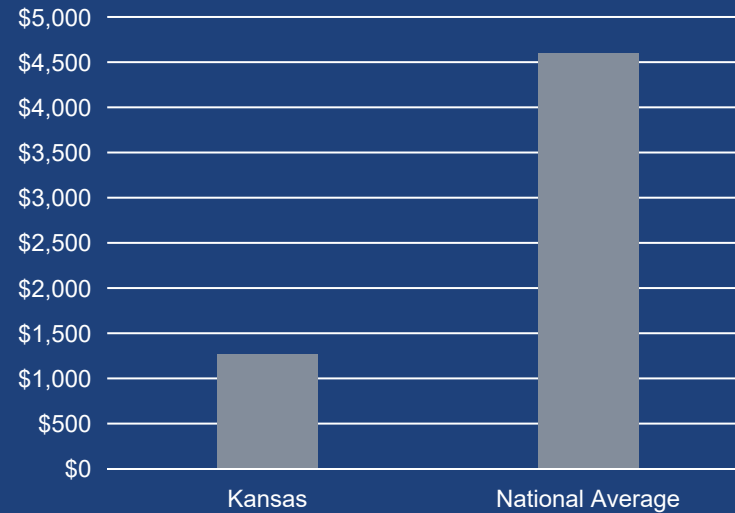
- Wichita ASR Permit Changes
- Rattlesnake Creek/Quivira
- Hays/R9
- Local Enhanced Management Areas

Dam Safety Funding

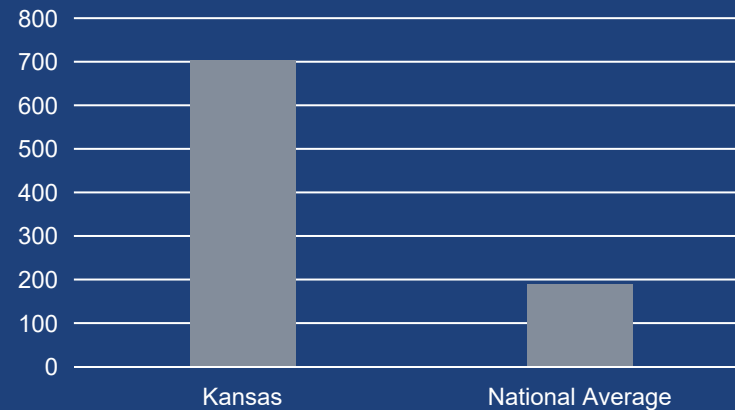


Dam Safety Funding

Funding per Regulated High Hazard Dam



Regulated Dams per FTE



Lack of Enforcement Tools

- 29 High Hazard dams have condition assessments of “Poor” or “Unsatisfactory.”
- Must pursue enforcement through court system.
 - Time consuming
 - Additional expense to the State



Emergency Structure Fund

- K.S.A. 82a-303c
 - Authorizes Chief Engineer to employ remedial means necessary to protect the safety of life or property.
 - **Does not establish funding** to employ the remedial actions.
- Required by the National Dam Safety Review board to receive Department of Homeland Security state assistance grant.



Needed Exemptions

- Dry detention road fill exemption.
- Low head dam exemption.
 - Permit as more intended function.
 - Alleviate undue burden of requiring many waivers.



Funding for Aging Infrastructure

- Many dams were constructed pre-1990.
 - Many dams are reaching or past their design life.
 - Corrugated metal pipe failure causing soil erosion.
 - Sedimentation plugging primary spillway.
- Remediation of many dams statewide would benefit Kansans.
 - Ensure flood protection
 - Protect life and property





**What about you
and your role?**



Questions?

Earl Lewis, P.E.

Chief Engineer

KDA, Division of Water Resources

Earl.Lewis@ks.gov

785-564-6658